

# Front Brake Squeal Noise

Service  
Category Brake

Section Brake (front)

Market USA

Toyota Supports  
ASE Certification 

Applicability

YEAR(S)	MODEL(S)	ADDITIONAL INFORMATION
2025	4Runner, 4Runner HV	
2024 - 2025	Land Cruiser	

Introduction

Some 2024 – 2025 model year Land Cruiser, and 2025 model year 4Runner and 4Runner Hybrid vehicles may exhibit a condition where the front brakes produce a squealing noise when driving in reverse. Follow the Repair Procedure in this bulletin to reduce the possibility of this condition.

Warranty Information

OP CODE	DESCRIPTION	TIME	OFP	T1	T2
BR2503	R & R Front LH & RH Shim Kit, and Brake Pad Kit	0.9	04945-60100	91	99

**APPLICABLE WARRANTY**

- This repair is covered under the Toyota Basic Warranty. This warranty is in effect for 36 months or 36,000 miles, whichever occurs first, from the vehicle’s in-service date.
- Warranty application is limited to occurrence of the specified condition described in this bulletin.

## Front Brake Squeal Noise

---

### Parts Information

PART NUMBER		PART NAME	QTY
PREVIOUS	NEW		
04465-60380	04465-34040	Pad Kit Disc Brake, Front	1
04945-60100	04945-0C060	Shim Kit, Anti Squeal, Front (Grease Included)	1
04947-60150	04947-0C030	Fitting Kit, Disc Brake Front (Anti-rattle Spring)	1
08887-80609		Brake Caliper Grease	1

#### NOTE

Brake caliper grease is a common service consumable. Verify dealership stock BEFORE ordering. The amount of grease supplied in a single order of brake caliper grease is sufficient to repair 10 vehicles.

### Required Tools & Equipment

SPECIAL SERVICE TOOLS (SST)	PART NUMBER	QTY
Disc Brake Piston Spreader Wide Type	09719-77020	1
	09719-77050	

#### NOTE

Additional SSTs may be ordered by calling 1-800-368-6787 or by visiting *Home – Service Resources – Toyota Tools and Equipment Program*.

## Front Brake Squeal Noise

---

### Repair Procedure

1. Confirm the condition exists.

Does the vehicle exhibit a condition where the front brakes produce a squealing noise when driving in reverse?

- **YES** — Continue to step 2.
- **NO** — This bulletin does NOT apply. Continue diagnosis using the applicable Repair Manual.

2. Remove the tire and wheel, pad, shim kit, and anti-rattle spring.

- A. Remove the tire and wheel.

Refer to TIS, applicable model and model year Repair Manual:

- [2024 – 2025](#) Land Cruiser:  
*General – Maintenance – Tire and Wheel – Removal*
- [2025](#) 4Runner and 4Runner HV:  
*General – Maintenance – Tire and Wheel – Removal*

- B. Remove the front disk brake pad.

Refer to TIS, applicable model and model year Repair Manual:

- [2024 – 2025](#) Land Cruiser:  
*General – Maintenance – Front Disc Brake Pad – Removal*
- [2025](#) 4Runner and 4Runner HV:  
*General – Maintenance – Front Disc Brake Pad – Removal*

## Front Brake Squeal Noise

### Repair Procedure (continued)

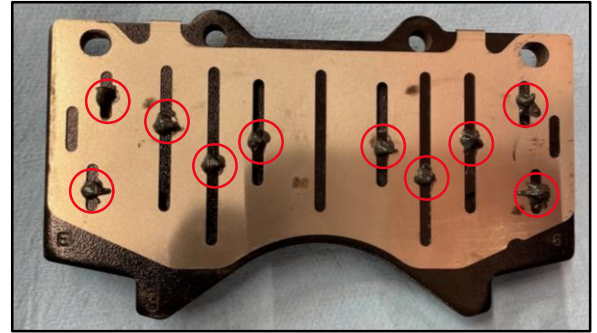
3. Assemble the brake pad and shim kit.
  - A. Place the shim plate on the back of the brake pad, as shown in Figure 1.
  - B. Apply grease ONLY to the 10 locations, as shown in Figure 1.

**NOTE**

Use the grease included with the shim kit (04945-0C060).

- C. After applying grease, carefully place the solid shim on top.

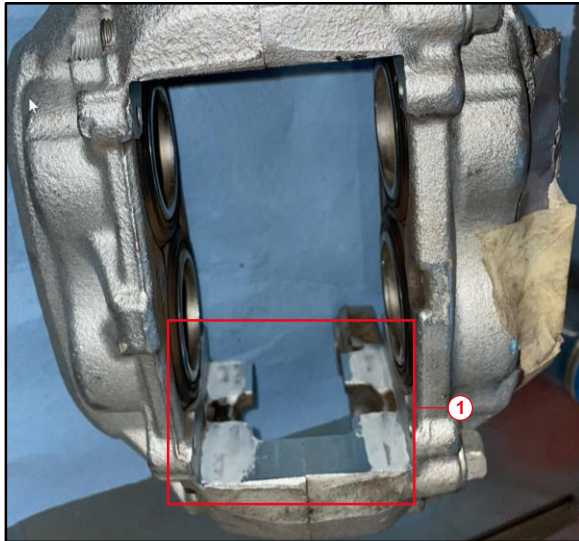
**Figure 1. Shim Plate on the Back of the Brake Pad**



Locations of Grease Application

4. Apply brake caliper grease to the cylinder (caliper) areas, as shown in Figures 2 and 3.

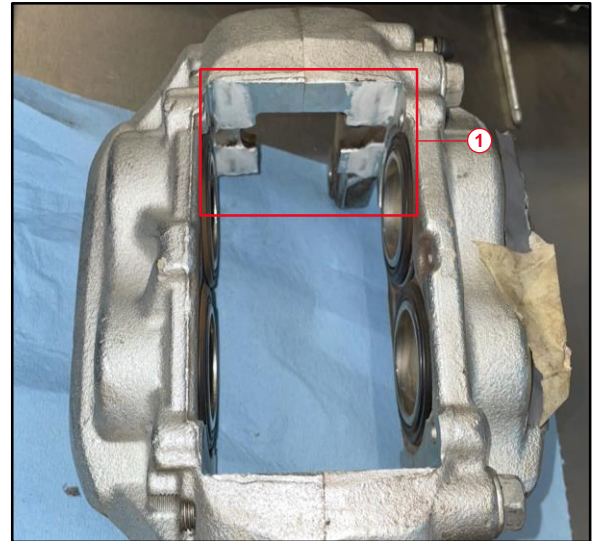
**Figure 2.**



1

Area of Grease Application

**Figure 3.**



1

Area of Grease Application

## Front Brake Squeal Noise

### Repair Procedure (continued)

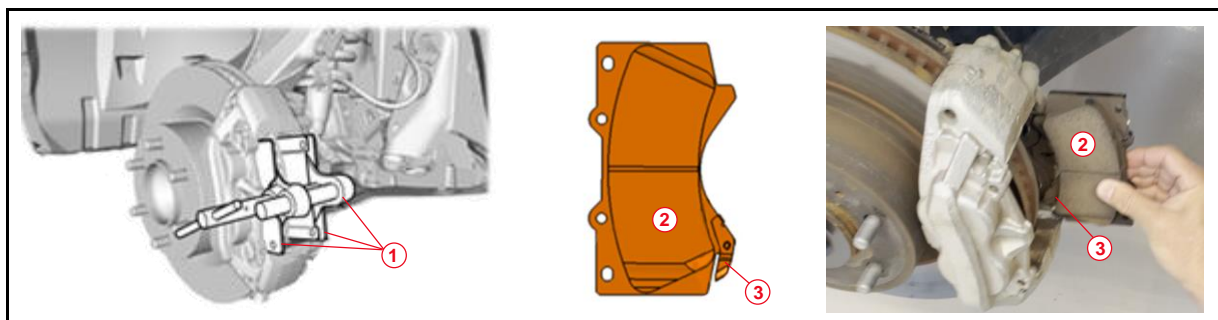
5. Install the front disc brake pad kit.

Using the disc brake piston spreader wide type, push back the front disc brake pistons, and install the brake pad with the wear indicator and shims inside the caliper, as shown in Figure 4.

#### NOTE

The brake pad with the wear indicator is the inner pad and the brake pad without the wear indicator is the outer pad.

**Figure 4. Brake Pad Installation**



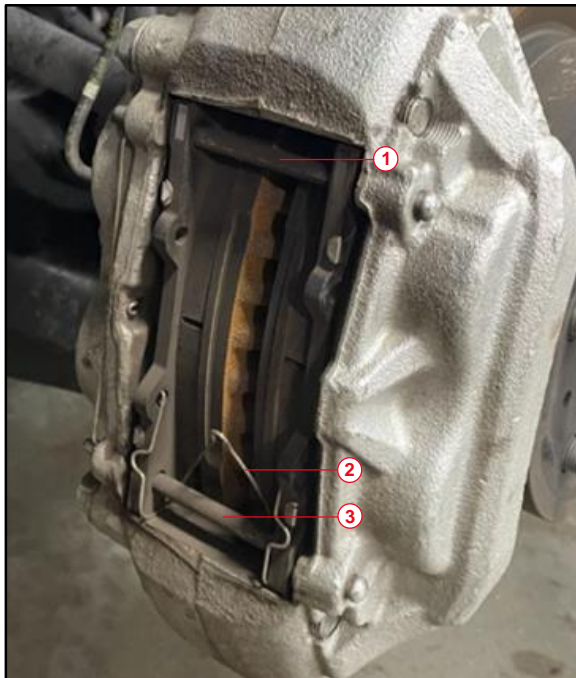
<b>1</b>	Disc Brake Piston Spreader Wide Type
<b>2</b>	Brake Pad with Wear Indicator
<b>3</b>	Wear Indicator

## Front Brake Squeal Noise

### Repair Procedure (continued)

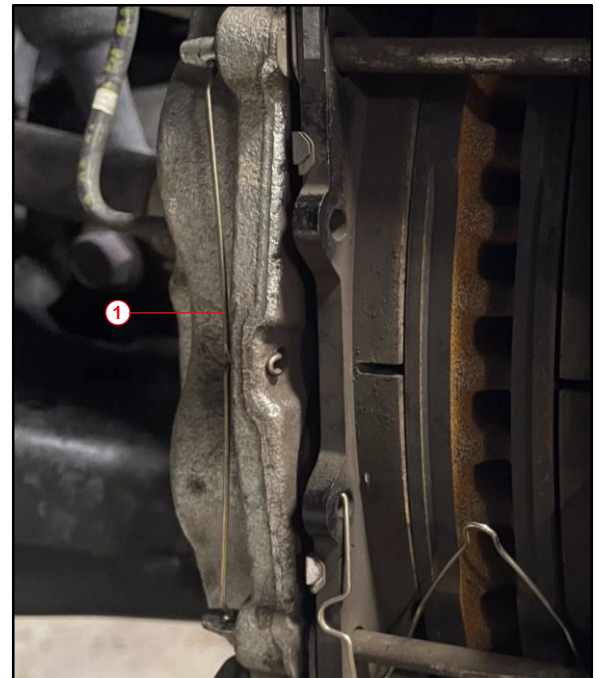
6. Install the anti-rattle kit.
  - A. Install the front disc brake anti-rattle pin with a hole (upper side).
  - B. Install the NEW brake anti-rattle spring, then install the front disc brake anti-rattle pin with hole (lower side), as shown in Figure 5.
  - C. Install the pin hold clip to the front disc brake anti-rattle pin with hole and engage the hook to the disc brake cylinder assembly, as shown in Figure 6.
  - D. Discard the OLD brake anti-rattle spring.

**Figure 5.**



1	Front Disc Brake Anti-rattle Pin (Upper Side)
2	New Brake Anti-rattle Spring
3	Front Disc Brake Anti-rattle Pin (Lower Side)

**Figure 6.**



1	Pin Hold Clip
---	---------------

## Front Brake Squeal Noise

---

### Repair Procedure (continued)

7. Install the tire and wheel.

Refer to TIS, applicable model and model year Repair Manual:

- [2024 – 2025](#) Land Cruiser:  
*General – Maintenance – Tire and Wheel – Installation*
- [2025](#) 4Runner and 4Runner HV:  
*General – Maintenance – Tire and Wheel – Installation*

8. Test-drive the vehicle by driving in reverse to confirm the condition is no longer present.